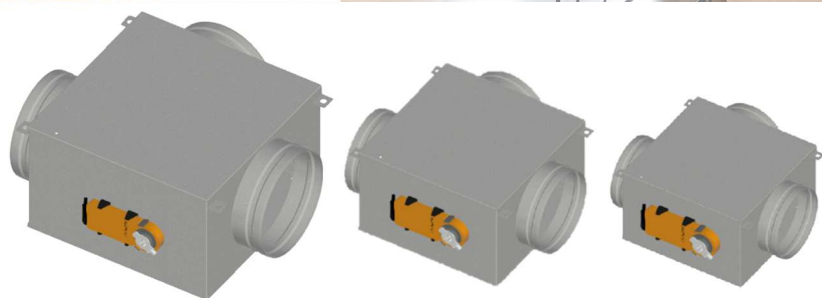


Atrea®

Leader in ventilation and heat recovery



Information leaflet



TKR SLIM

Fittings for implementing zoning in ventilation systems

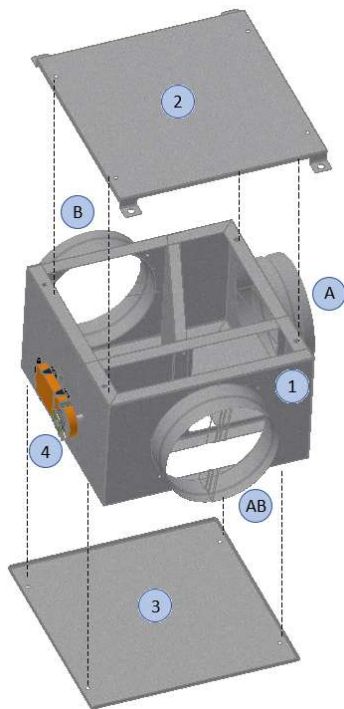
The ATREA TKR SLIM fitting is designed for targeted air extraction according to current needs. It consists of two shut-off dampers controlled by a single servo drive. The dampers operate in an anti-parallel manner, which means that when one damper is open, the other is closed, and vice versa.

The fittings are available in three sizes of inlet/outlet necks and in two types of servo drives for two-stage control or for continuous control using the MP-bus communication protocol.

Version: 02 / Issue: 2026_01 / Code: R_48I_CZ_V02

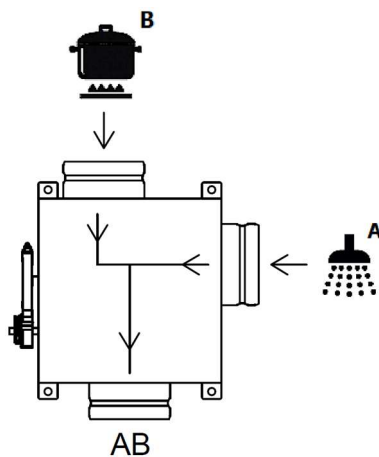
RL design

The RL design is universal, intended for right-hand (R) or left-hand (L) installation. The choice of installation position (R) or (L) is made at the installation site according to the needs of the project. The neck (A) is designed for extracting air from sanitary facilities (bathrooms, toilets, changing rooms and storage rooms), while the neck (B) is used for extracting air from kitchens. The mounting plate (2) is fitted to the top of the fitting and also allows the fitting to be attached to the ceiling or wall. The inspection panel (3) is then fitted to the opposite side so that the fitting is accessible for inspection if necessary.

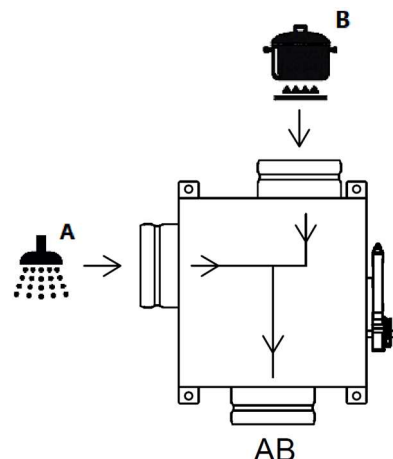


- 1 Fitting body
- 2 Mounting plate
- 3 Inspection panel
- 4 Servo drive
- A Neck for extraction from bathroom and toilet
- B Neck for extraction from the kitchen
- AB Common vent pipe

Right mounting position (R)

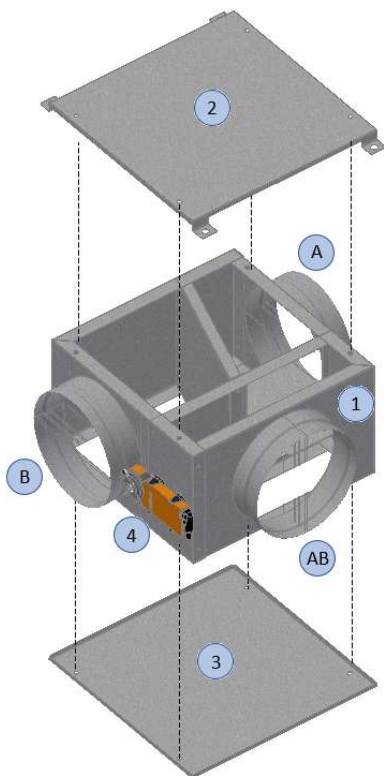


Left mounting position (L)



T version

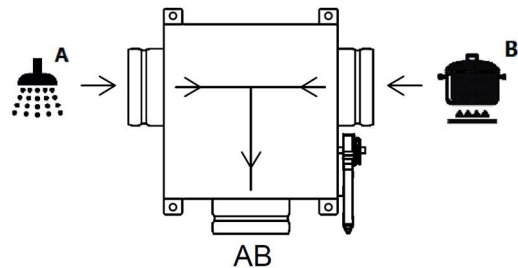
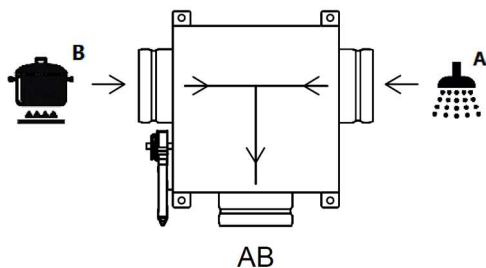
The T version allows for two mounting positions. The choice of mounting position (TR) or (TL) is made at the installation site according to the needs of the project. The connection (A) is designed for extraction from sanitary facilities (bathrooms, toilets, changing rooms and storage rooms), while the connection (B) is used for extraction from kitchens. The mounting plate (2) is fitted to the top of the fitting and also allows the fitting to be attached to the ceiling or wall. The inspection plate (3) is then fitted to the opposite side so that the fitting is accessible for inspection if necessary.



- 1 Fitting body
- 2 Mounting plate
- 3 Inspection plate
- 4 Servo drive
- A Neck for extraction from bathroom and toilet
- B Neck for extraction from the kitchen
- AB Common vent pipe

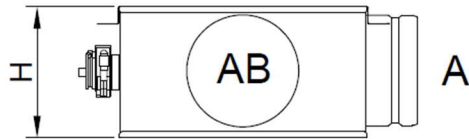
Right mounting position (TR)

Left mounting position (TL)

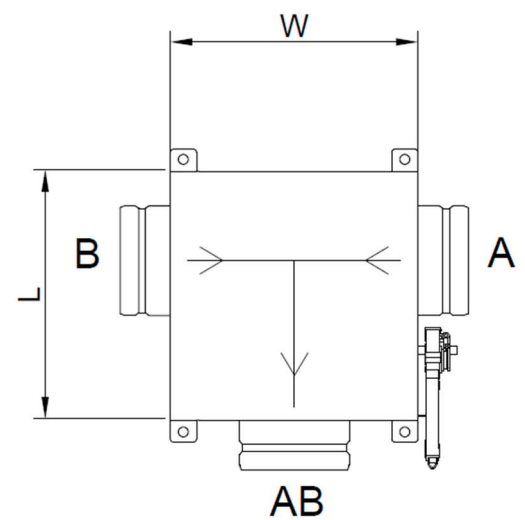
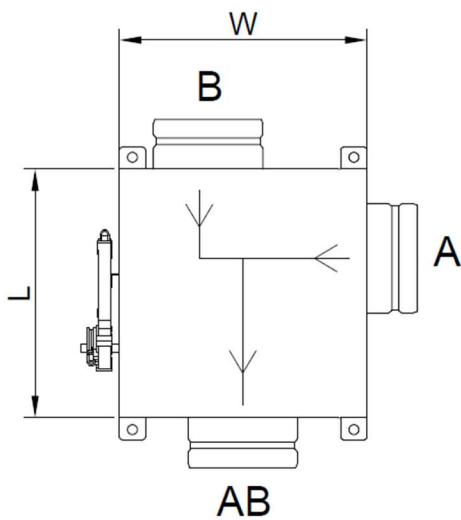
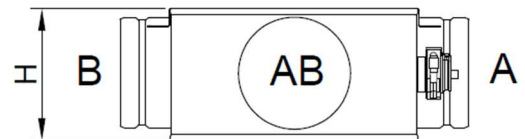


Dimensions

RL version



T version



Order No.	Type	Servo drive	Neck diameter (inner coupling diameter)	Length	Width	Height
			[mm]	L [mm]	W [mm]	H [mm]
R150121	TKR SLIM 125 RL	Belimo CM24-L	Ø125	286	286	149
R150122	TKR SLIM 125 T	Belimo CM24-L				
R150123	TKR SLIM 125 RL-MP	Belimo CM24-MPL-L*				
R150124	TKR SLIM 125 T-MP	Belimo CM24-MPL-L*				
R150161	TKR SLIM 160 RL	Belimo CM24-L	Ø160	326	326	184
R150162	TKR SLIM 160 T	Belimo CM24-L				
R150163	TKR SLIM 160 RL-MP	Belimo CM24-MPL-L*				
R150164	TKR SLIM 160 T-MP	Belimo CM24-MPL-L*				
R150201	TKR SLIM 200 RL	Belimo CM24-L	Ø200	366	366	222
R150202	TKR SLIM 200 T	Belimo CM24-L				
R150203	TKR SLIM 200 RL-MP	Belimo CM24-MPL-L*				
R150204	TKR SLIM 200 T-MP	Belimo CM24-MPL-L*				

* MP drive variants are intended exclusively for use with **GREEN box Lite** and **GREEN box Net** systems

Servo drives

Each design and size of the TKR SLIM fitting is available with two types of servo drives.

1. Belimo CM24-L

Servo drive suitable for two-position control (open/closed).

- Servo drive power supply 24 V AC/DC
- Control signal for switching to the second position 24 V AC/DC

Full compatibility with two-position control from **DUPLEX** units with **aMotion** regulation and **GREEN box Lite** and **GREEN box Net** systems.

The default position of the TKR SLIM damper with CM24-L servo drive (after connecting the power supply 24 V AC/DC) is such that route **A** is open and route **B** is closed. By applying a control signal (24 V AC/DC) to terminal (3) of the servo drive, the dampers move to the opposite position.

Wiring diagram

AC/DC 24 V, open/closed



Colors of veins:

- 1 = black
- 2 = red
- 3 = white

2. Belimo CM24-MPL-L

Actuator suitable for control via MP-bus communication protocol. Continuous control of actuator position possible.

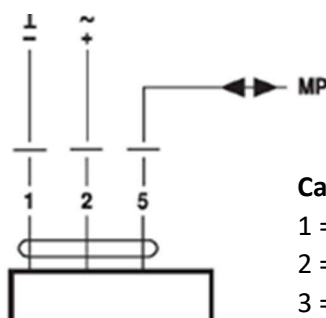
- Actuator power supply 24 V AC/DC
- control signal for position adjustment MP-bus

Support for continuous (three-position) control via **GREEN box Lite** and **GREEN box Net** systems. Not compatible with **DUPLEX** units.

The default position of the actuator is arbitrary according to the default MP-bus control signal.

Wiring diagram

AC/DC 24 V, MPL

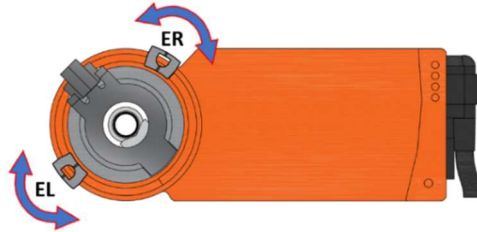


Cable colors:

- 1 = black
- 2 = red
- 3 = orange

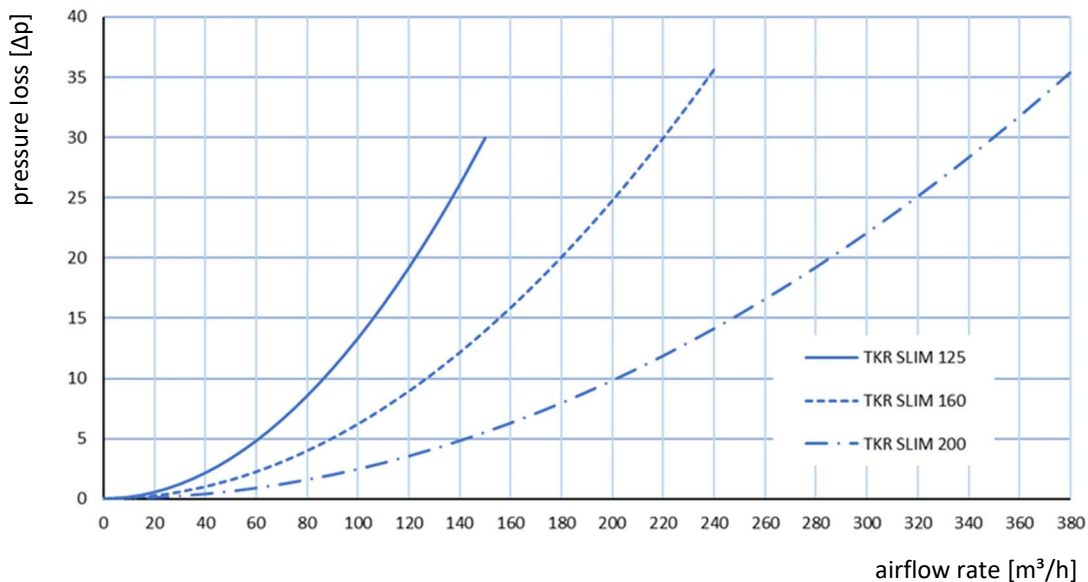
End position setting

It is often desirable to extract air from both routes A and B at the same time. For example, if there is a requirement to open route B (towards the kitchen), it is advantageous to have at least minimal extraction from route A (bathroom, WC) as well. This will ensure negative pressure in sanitary rooms and prevent the spread of odours and moisture to other parts of the flat. This can be achieved by adjusting the **ER** and **EL** mechanical stops. The stops can be readjusted to any position without special tools.



Further technical data

Pressure losses



Acoustics

At air flow speeds through the AB throat of up to 3.4 m/s, the fitting does not behave as a significant source of acoustic power.

Recommendations

The maximum recommended flow rates for residential applications are listed in the following table.

Type	Max. recommended air flow
	[m³/h]
TKR 125	150
TKR 160	240
TKR 200	380



Information leaflet

Atrea[®]